



February 2016
Distribution Is Unlimited
<https://cops.usace.army.mil/sites/EC/SM/default.aspx>

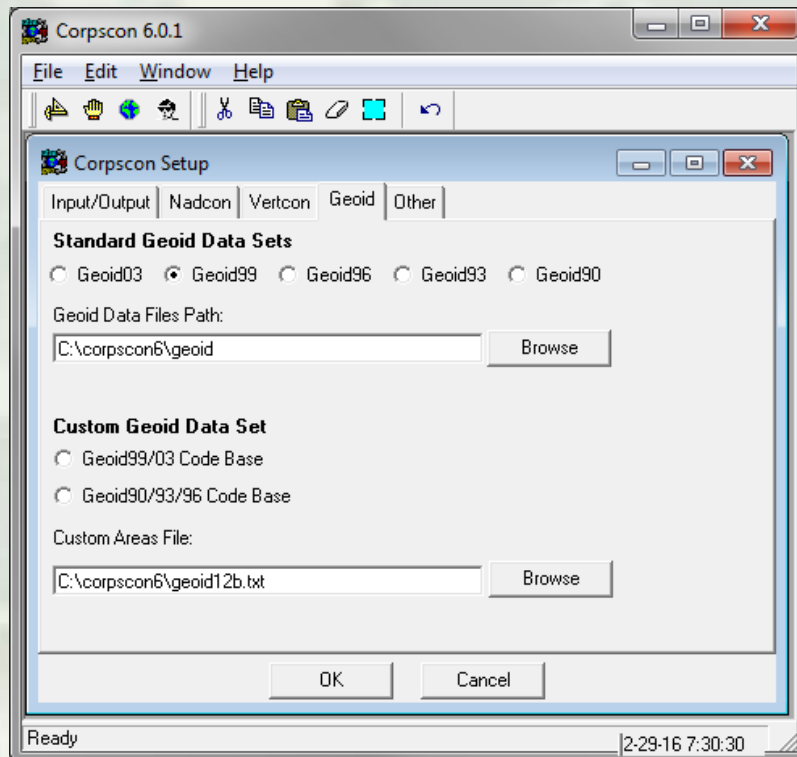
Mark W. Huber, 571-216-0365
mark.w.huber@usace.army.mil
Survey Engineering and Mapping
Technical Center of Expertise

SURVEYING AND MAPPING COMMUNITY OF PRACTICE Bulletin

CORPSCON and Geoid12B:

You can configure Corpscon6 to use Geoid12B by following the steps below:

1. Download all* the Geoid12B files (g2012bu*.bin) from the NGS site (<http://www.ngs.noaa.gov/GEOID/GEOID12B/>) to the Corpscon Geoid directory.
2. Save the attached file "geoid12b.txt" to the same directory "C:\Program Files\Corpscon6\Geoid\geoid12b.txt".
3. Open Corpscon and go to Convert->Setup and choose the Geoid tab page.
4. Select Custom Geoid Data Set->Geoid99/03 Code Base.
5. Browse to and select the geoid12b.txt file saved above "C:\Program Files\Corpscon6\Geoid\geoid12b.txt" as your Custom Area File.
6. Your configuration should look something like the image below
7. Press OK.



* Note: You do not have to download all of the geoid12b files. You can download only those for the region(s) that you normally work in.

!!! Caution !!! – Reminder: Corpscon 6x has a bug when outputting the CSF. The CSF is erroneous and should not be used. Corpscon 5 can be used for this. Both versions are available at <http://www.agc.army.mil/Missions/Corpscon.aspx>